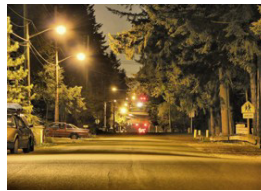
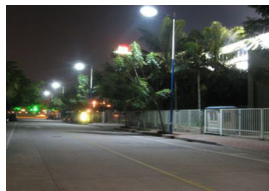


SOLAR STREET LIGHTS



**GREEN ENERGY LLC / GESOLAR FZ LLC**  
(An ISO 9001:2000 certified company)

## SODIUM LOW PRESSURE VAPOUR LIGHTS

Solar Low pressure Sodium light is an independent renewable lighting system, which has the characteristics of energy saving and environment protection. Solar Low pressure Sodium Light can be used for public lighting on roads, residential areas, parks and shopping malls. The main system of solar Low Pressure Sodium Lights is the Solar generation system, the Solar module which collects sunlight and converts into Electricity which in turn charges the maintenance free sealed battery during the day time. At night the light turns on automatically, using the electricity which is stored in the batteries during the day. No wiring, no utility bills to be paid, with lighting option from 4 to 12 hours. The pole for solar street light is made of high quality steel with painting or lacquering after hot galvanisation. It is strong, durable and easy to install. The main components of the solar street lights System includes the Solar Modules, Solar Low pressure Sodium controller and ballast, maintenance free Lead Acid Battery. Nonetheless SOX are the most common light in most cities today with their unique monochromatic orange color (sodium line 590 nm) for high contrast visibility in mist and fog. This is ideal for lighting arterial roads, motor ways tunnels, canal sand locks.

Uniform sodium distribution in the discharge tube by means of dimples, higher efficiency and better lumen maintenance for lamp life. Monochromatic yellow color with non-existent color rendering



MODEL	GES - LPS - 26	GES - LPS - 36	GES - LPS - 55
Solar Modules	80 Wp	120 Wp	240 Wp
Battery	100 Ah/12V	150 Ah/12V	150 Ah/12V x 2
Lamp	LPS 26W	LPS 36W	LPS 55W
Lamp Fixture (height)	4m - 6m	6m - 8m	8m - 10m
Ballast (Power)	26W	36W	55W
Charge Controller	10A/12 - 24V	10A/12 - 24V	20A/12 - 24V

## SODIUM LOW PRESSURE VAPOUR LIGHTS

SOLAR PANEL	BATTERY
<ul style="list-style-type: none"> <li>* Multy-Crystal Silicon</li> <li>* Power : 100 Wp - 300 Wp</li> <li>* Voltage : 12 V-24 V</li> <li>* Amperage : 4.5 A - 4.77 A</li> <li>* Warranty : 20 years</li> <li>* Max. Wind Velocity : 140 km/hr</li> </ul>	<ul style="list-style-type: none"> <li>* Voltage : 12V</li> <li>* Capacity : 120 Ah - 200 Ah</li> <li>* Warranty : 3 Years</li> <li>* 100% Maintanance Free</li> <li>* Gelled Electrolite</li> <li>* Sealed Valve Regulated</li> <li>* Eliminates Vibration Damage</li> <li>* heavy Duty Tank Formed Plates</li> <li>* Calcium/Copper Lead Alloy Grids</li> </ul>
LAMP	LAMP FIXTURE
<ul style="list-style-type: none"> <li>* SOX - 26, SOX - 36, SOX - 55</li> <li>* Life : 2 years</li> <li>* Ideal for roadway Lighting, Bridge and Tunnel Lightings</li> </ul>	<ul style="list-style-type: none"> <li>* Height of The Pole : 4 -10 m</li> <li>* Suitable For Single Lamp : LPS - SOX -55</li> <li>* Porcelain Holde : LPS - SOX -55</li> <li>* Aluminium Fixture Body</li> <li>* Photocell Sensor</li> </ul>
BALLAST	CHARGE COTROLLER & DUSK/DOWN SWITCH
<ul style="list-style-type: none"> <li>* DC Ballast</li> <li>* Suitable for Lps Lamps</li> <li>* Power : 26 w - 55 w</li> <li>* Voltage : 12 VDC - 24 VDC</li> <li>* Amperage : 2.2 A</li> <li>* Fixed Inside the Lamp Fixture</li> </ul>	<ul style="list-style-type: none"> <li>* 12/24 VDC, 9 - 20 A</li> <li>* Solid State</li> <li>* Long Life</li> <li>* Optimized for Long Battery Life</li> <li>* Surge Protection\</li> <li>* Fully Automatic Control</li> <li>* Solid State</li> <li>* Variable Hour runtime Setting: 5,6,7,8,12</li> </ul>
WIRING SYSTEM & ACCESSORIES	DUSK/DOWN
<ul style="list-style-type: none"> <li>* Charging Cable</li> <li>* Lamp and Accessories Cable</li> <li>* Battery Terminals and cables</li> <li>* Isolated Connection Terminals</li> <li>* Wiring Diagram</li> </ul>	<ul style="list-style-type: none"> <li>* General Charectoristics</li> <li>* Operating Temperature : -40 to +60 deg</li> <li>* Humidity : 10% to 95%</li> <li>* Altitude : 0 to 1000m</li> <li>* Long Life</li> </ul>

\* Above specifications are for 8-10 hours of applications for dusk-dawn. Kindly send us your solar insolation details via return email.

\* 2 Years system warranty

\* Errors expected and possible alterations without prior notice.

## GREEN ENERGY LLC / GESOLAR FZ LLC

(An ISO 9001:2000 certified company)